

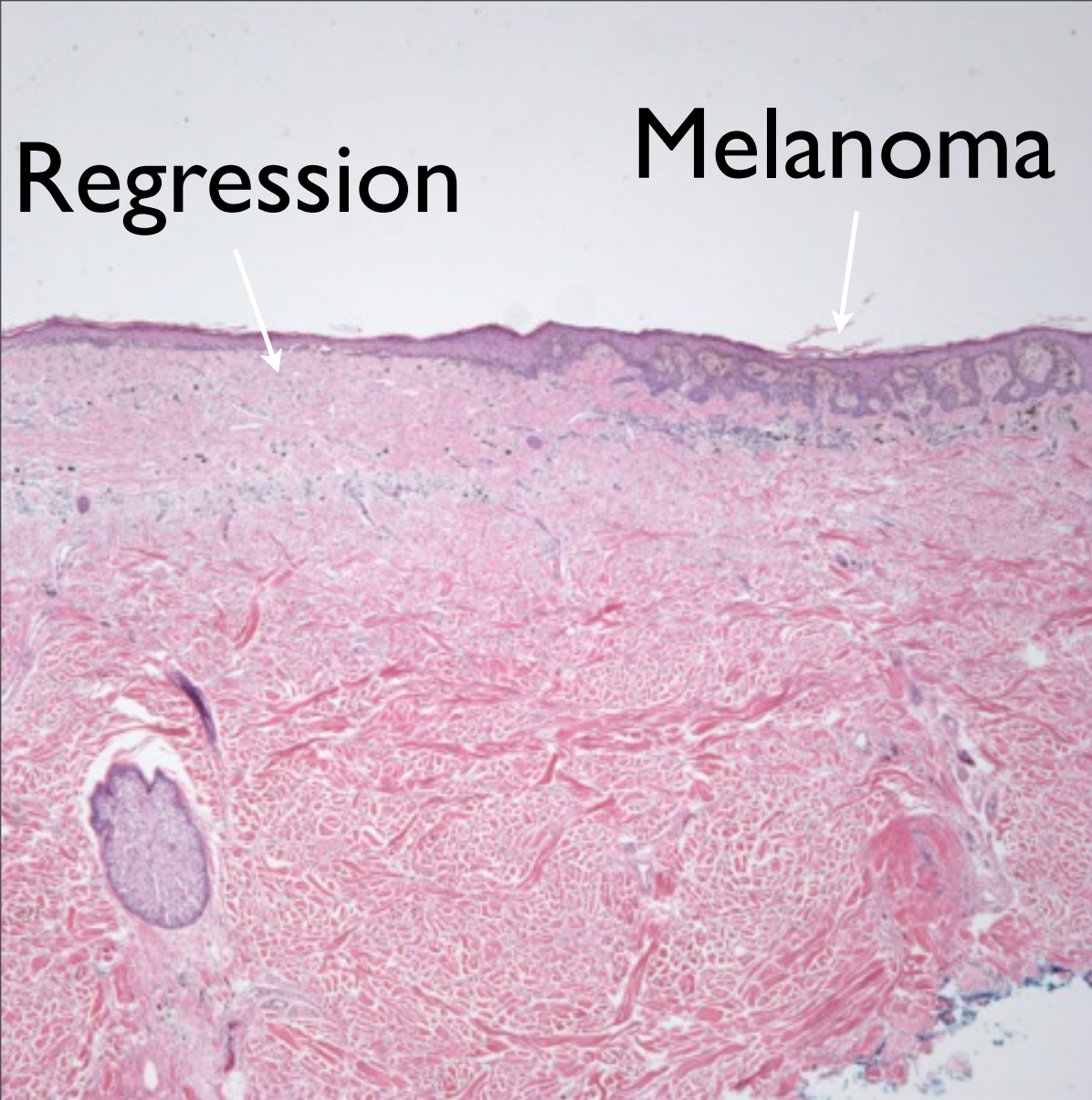
Melanoma with Regression

Notes

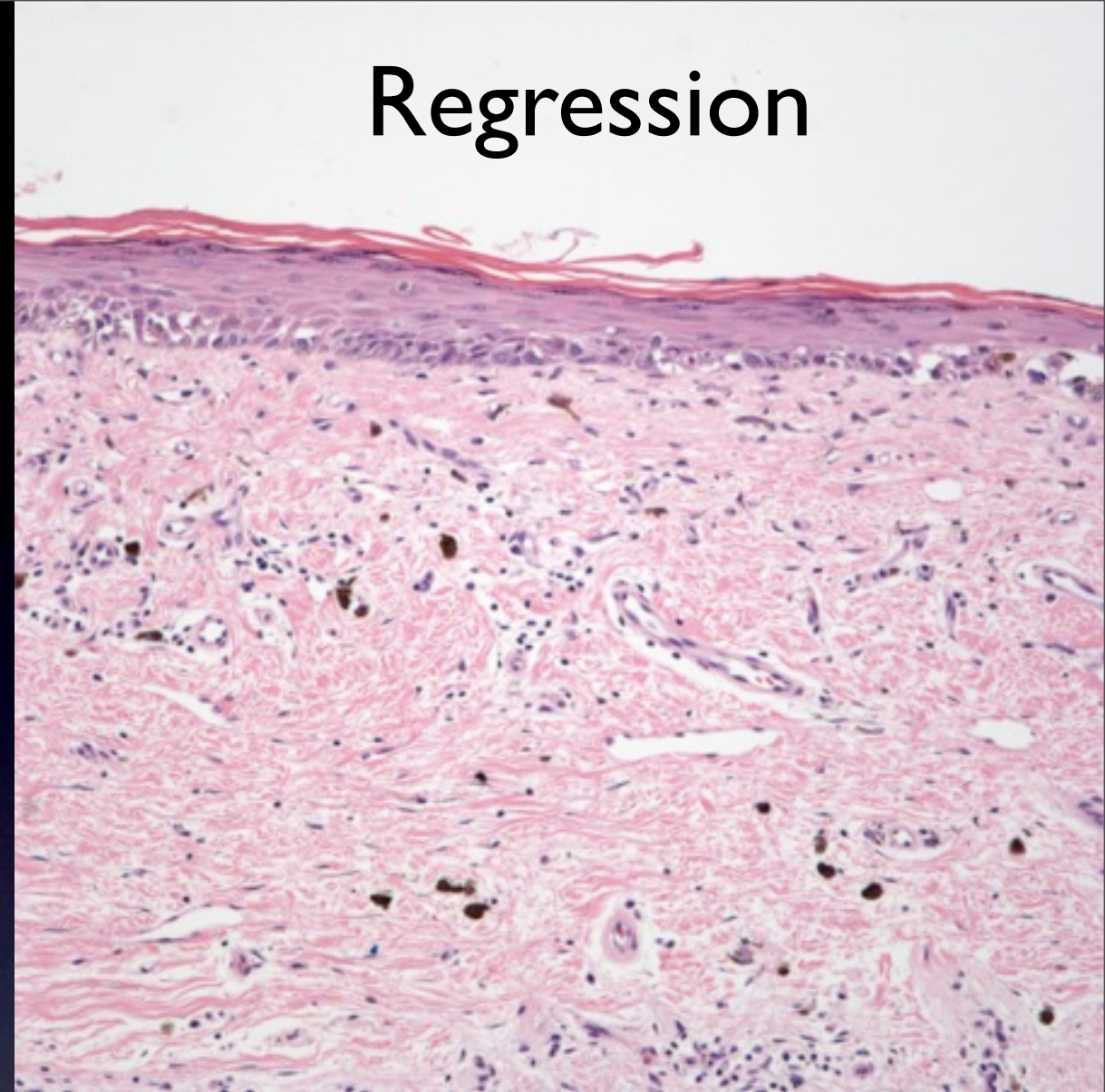
- Although this melanoma is limited to the dermal-epidermal junction, the diagnosis of melanoma in situ would be biologically inappropriate since in the presence of regression, the possibility of a prior invasive melanoma component cannot be excluded.

Regression

Melanoma



Regression



Fibroplasia, flattened rete
ridge, telangiectasia,
melanophages